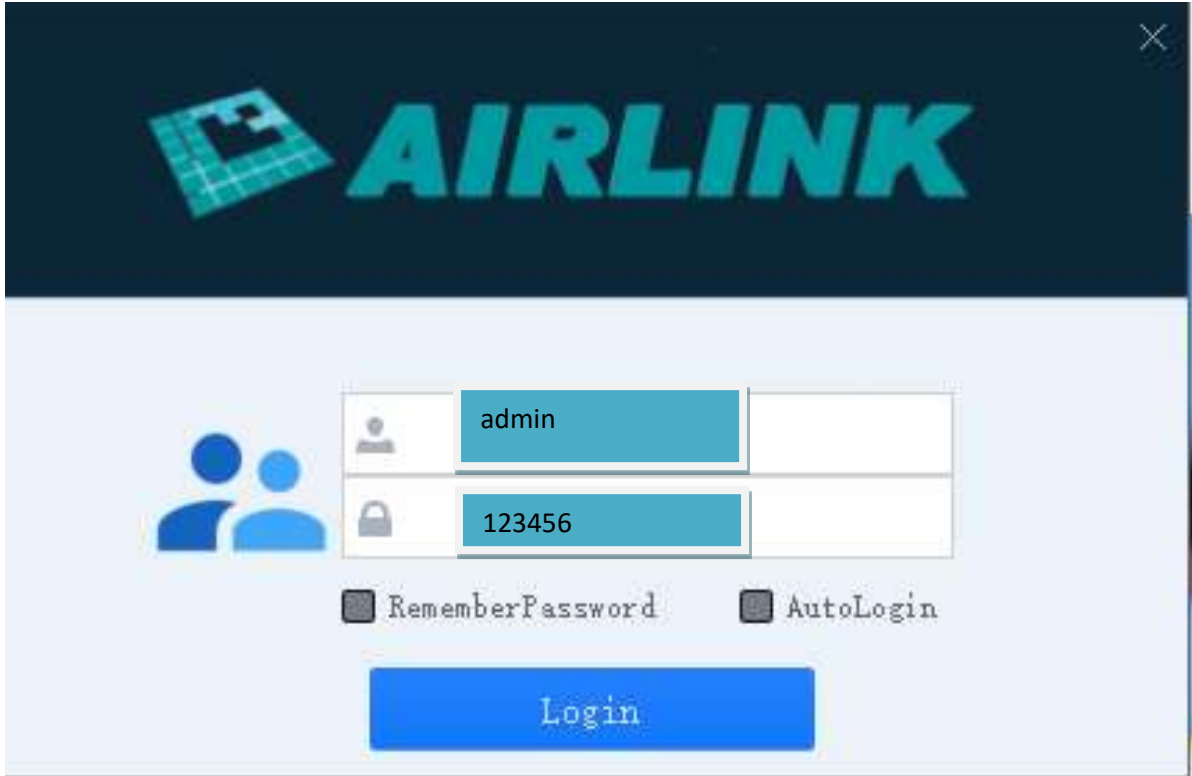


# H.265 IP Camera User Instruction Manual Quick Guide

## 1) Install CMS



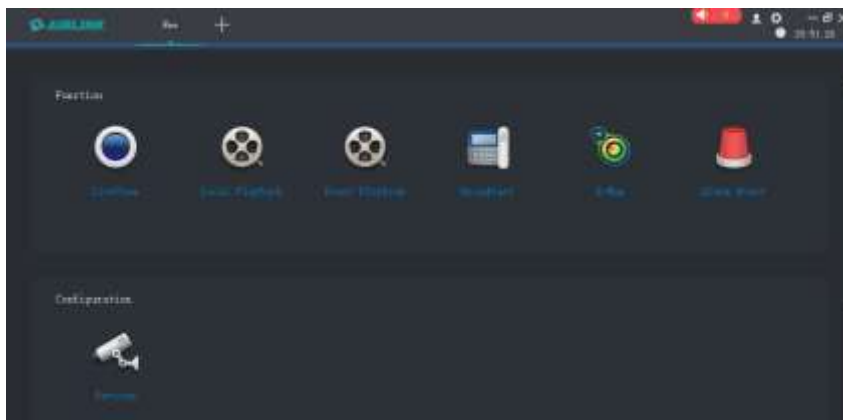
Step 1: Connect IP camera through LAN to your router

The default username: admin, password: 123456.



**Step 2: Click**  **add new device, auto search IP address**

The IP address should be the same with your router, if not, please modify IP address





## 2)IE The default username: admin, password: 123456



**Central Management System**



Username

Password

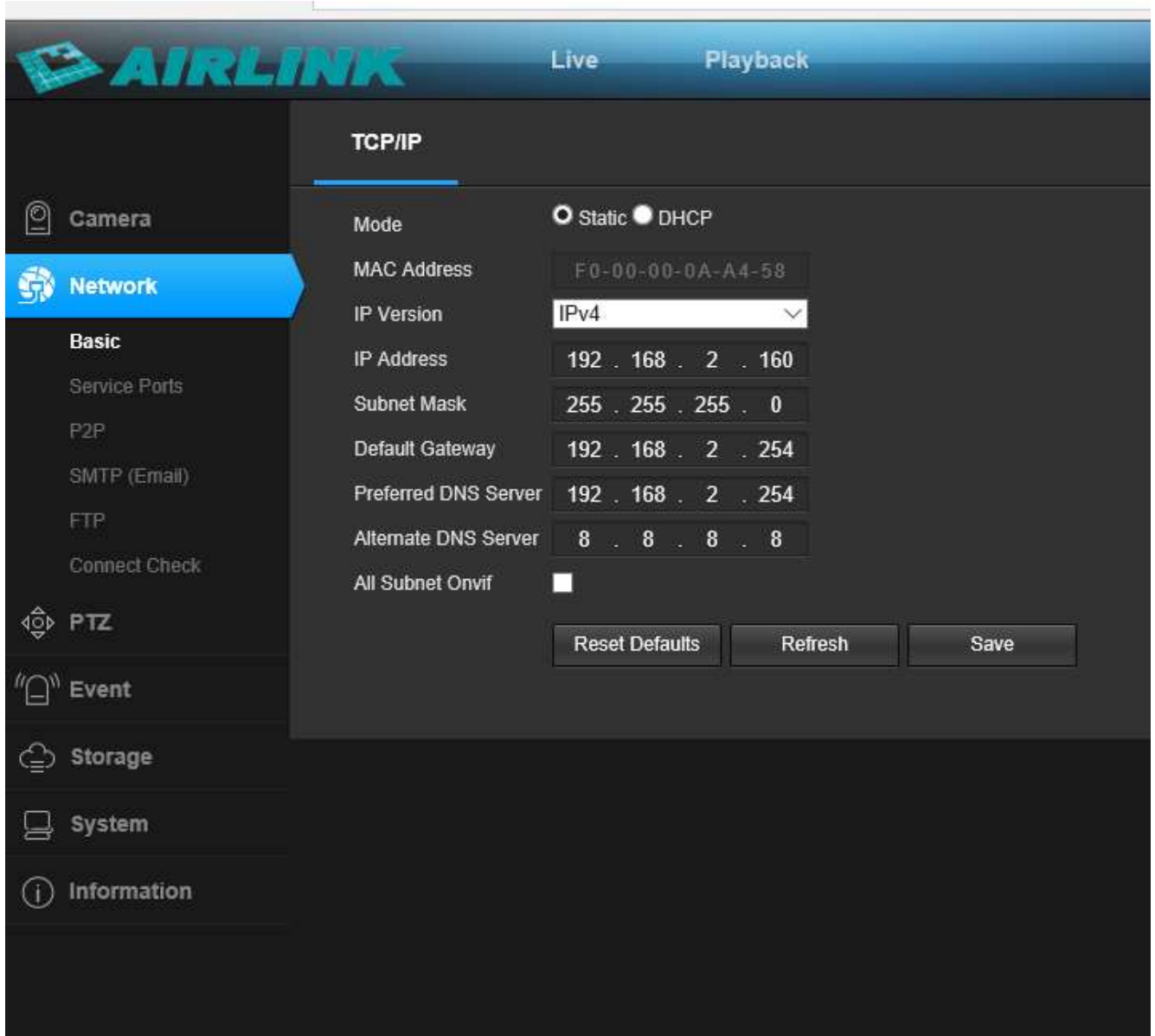
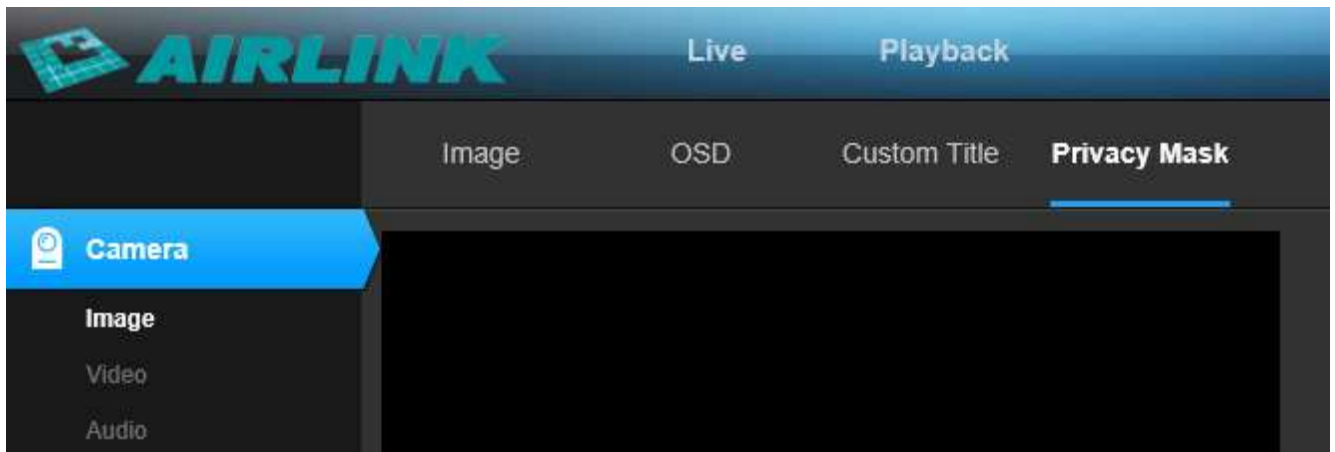
Language:

Install WebPlug-in when red line characters prompted. You may have to download WEBConfig.exe and run it as administrator. You can also install the WEBConfig.zip from the version<Download Web Plug-in. **if some uncertain problems happen during Web Plug-in loading. After installation, restart or refresh your web browser and access the IP again.** The live video will start automatically after login successfully.

Version	
Kernel Version	Linux 3.18.30 #21 PREEMPT Sun Apr 8 19:02:21 CST 2018 armv7l
File System Version	MT200E_AF_V0-TAOS-H5 V2.3.18 build 2019-06-03 17:39:18
Web Version	2018-09-07 12:28:00
S/N	EF00000000AA458
Web Plug-in Version	Not detected <a href="#">Download Web Plug-in</a>

### General Configurations

- 1) Power System frequency configuration (50Hz/60Hz) Configuration>Camera>Image>Power Frequency  
To avoid the video flicker, the camera should be set to right working frequency to suit the country electric system. The countries that use 60Hz have USA, Canada, Japan, Korea, Taiwan, Brazil, Philippines, Mexico. Other countries apply 50Hz.
- 2) To modify the camera Title name and Time & Date Configuration>Camera>Image>OSD>Title Message



- 3) To enable Motion Detection Alarm    Configuration>Event>Video Detection
- 4) When Motion is detected , there is a small alarm light pup up beside the Alarm menu. You can also setup an email address or FTP storage server to receive the motion snapshot.

- 5) Tips: if the Login Status shows Offline, please check your Internet connection and IP camera TCP/IP Network configurations. Please make sure to use a valid DNS server IP in the TCP/IP Network setting.

## Remark: 4G H.265 How to connect 4G SIM card data

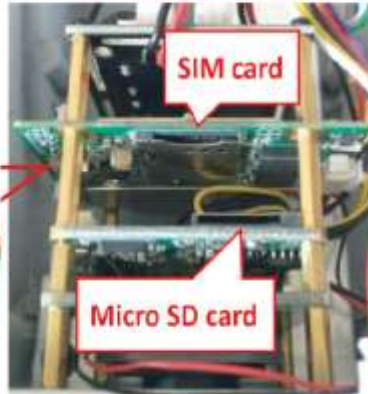
### GET STARTED IN MINUTES

★ Step 1 : Insert the Micro SD card and SIM card **before power on devices**

Note the direction of the SIM card!



SIM card type is Nano SIM(12.3mmx8.8mm)



★ Step 2 : Plug in antennas, power on device. Login MiFi SSID MiFi- xxxxx password : 1234567890 MiFi IP : 192.168.100.1 password: admin double check the 4G signal if there has connection problem

Perfect signal shows as below



Remark: Network cable(LAN) interface is not available for 4G cameras